

# PCI™ Controller

**PC-based controller provides complete system monitoring and control of your adhesive and sealant dispensing with “Online” accessibility.**



## Features and Benefits

- **Simple design immediately identifies dispensing process faults for reduced rejects and less downtime.**
- **User-friendly PC interface and Internet access for easy troubleshooting and maintenance.**
- **Controls and monitors dispensing system, pump system, and optional temperature conditioning system throughout operation.**
- **Records process data including part ID, actual and setpoint volumes, and fault codes.**
- **Designed to run all Nordson metering systems including Pro-Flo®, CP Gun, Pro-Meter®, Servo 2K and Servo Shot Meter System.**
- **Controller flexibility allows it to be used with a variety of Nordson dispensing systems to meet almost any application requirement.**

The Nordson PCI™ Controller is a computer-based management system that provides simple, accurate monitoring and complete control of various functions during the dispensing process. Controller diagnostics use a series of faults and alarms to quickly identify system malfunctions.

The PCI controller's PC-interface and Internet-access capability provides easy access to manuals and online assistance for troubleshooting and maintenance.

## Complete Monitoring and Control Capabilities

The PCI controller uses a touch-screen display to provide precise graphic representation of the dispense system and controls all aspects of the dispensing equipment including volume dispensed, system pressures, cable continuity and component function.



In addition, the PCI controller directs dispense valve logic, and can control the bulk pumps and optional temperature conditioning systems. This ensures proper function of these auxiliary units by monitoring the operating conditions of all system components.

- Controls single- or dual-dispense systems integrated with single- or dual-robot automation systems.
- Manages signals to and from the automation controller for proper sequence and timing.
- Capability for 32 part ID's per system.
- Records and graphs process data, such as date, time, Part ID, setpoint and actual volumes and pressures, and fault codes in real time, depending on system capabilities.
- Informs operator of fault conditions and identifies location of error.



# Flow-Through-Felt Dispensing System

## PCI Controller — Faults and Alarms

The controller monitors and displays a wide range of system faults and alarms including high-or low-volume pressure, empty drum levels, and over/under temperature.

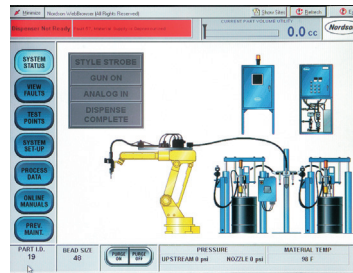
- Fault beacon and controller lights identify exact location of the error.
- Operator receives information about the fault in order to clear it or take action on the problem.
- A hyperlink on the touch screen links to detailed instructions in the system/component operating manual.

## SPC Reporting

The PCI controller offers data logging capability to compare actual system performance with dispensing process specifications. System volumes, pressures and faults are constantly recorded. Data is available through a serial port, as well as on the touchscreen display and can be easily downloaded to a lap top computer, a factory information system, or to a Nordson data collector.

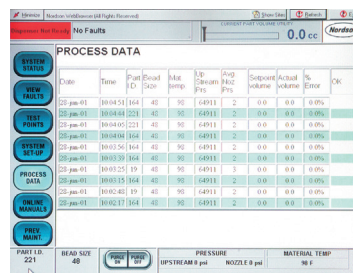
## Technical Specifications

Precision Regulator	
<b>Dimensions: Height</b>	24 in. (61 cm)
<b>Width</b>	24 in. (61 cm)
<b>Depth</b>	10 in. (25 cm)
<b>Available Input Power</b>	120/200/240 VAC, 50/60 Hz 3 Amp Maximum
<b>Minimum Range</b>	0 – 10 VDC



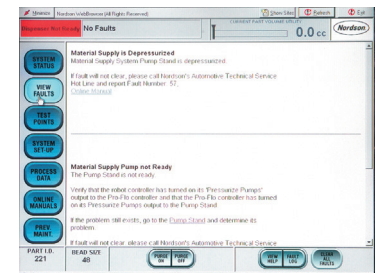
### SYSTEM STATUS

Visual status of the dispensing system is displayed and includes interface with automation, bulk delivery system and optional temperature conditioning systems. Flashing icons highlight trouble areas and when selected, display help screens to resolve the issue.



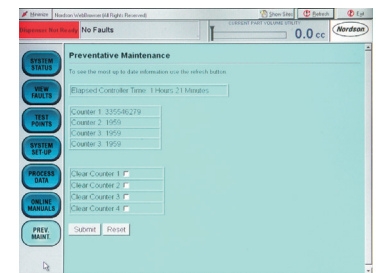
### PROCESS DATA

Operating parameters such as delivery pressure, nozzle pressure, volume dispensed and any faults on a part by part basis are displayed.



### VIEW FAULT

Step by step instructions on how to fix any system fault are displayed. Hyperlinks to the online manuals provide more detailed information.



### VIEW FAULT

Step by step instructions on how to fix any system fault are displayed. Hyperlinks to the online manuals provide more detailed information.

© 2018 Nordson Corporation | All Rights Reserved | CNL-18-1347 | Revised 1/18

## Nordson Industrial Coating Systems

100 Nordson Drive  
Amherst, OH 44001  
USA

Phone: +1.440.985.4000  
[www.nordson.com/ics](http://www.nordson.com/ics)



/Nordson\_Coating



/NordsonICS



/company/nordson-industrial-coating-systems

Find your local Nordson office:

[www.nordson.com/icslocations](http://www.nordson.com/icslocations)

Performance by design

